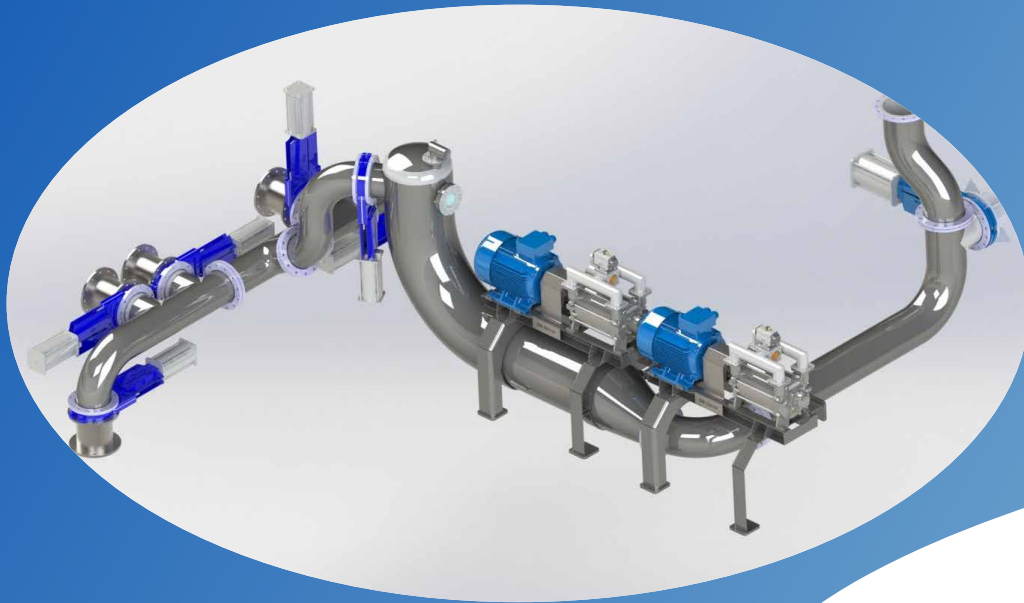


# NEW PRODUCTS

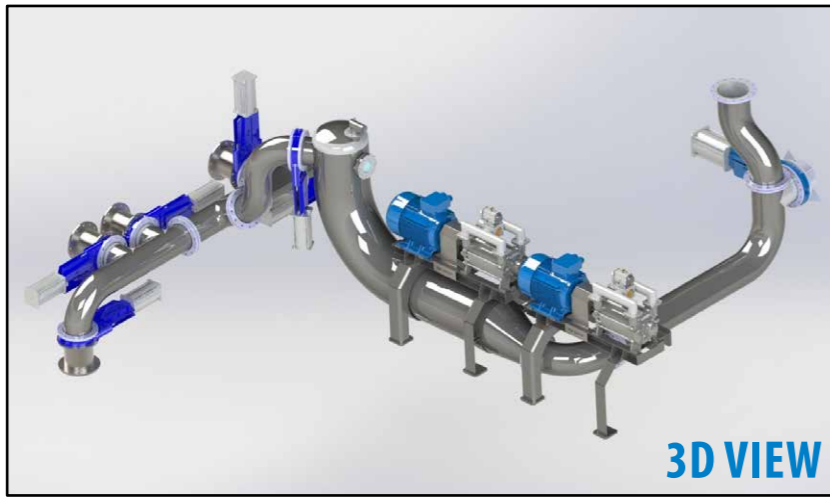
## Containerised RSW System



## Compact Vacuum Pump System



**KER**  
GROUP



3D VIEW

## COMPACT VACUUM PUMP LANDING SYSTEM

A new compact and refined solution which allows a vessel to maintain a high volume whilst taking up less space. The tank is incorporated into 24" and 14" stainless steel piping which eradicates the space needed for a vacuum tank with a large cubic volume. KER implemented this innovative solution into the MFV "Eilean Croine" and MFV "Sparkling Star" new builds completed in Killybegs.

It incorporated 2 x Samson Ocean Master 1000's with the equivalent of a 3000-litre tank. The system is supplied with a full automation package including a custom designed PLC and Touchscreen. This cutting-edge design is an effective option for vessels who previously had issues with space that could not be solved.



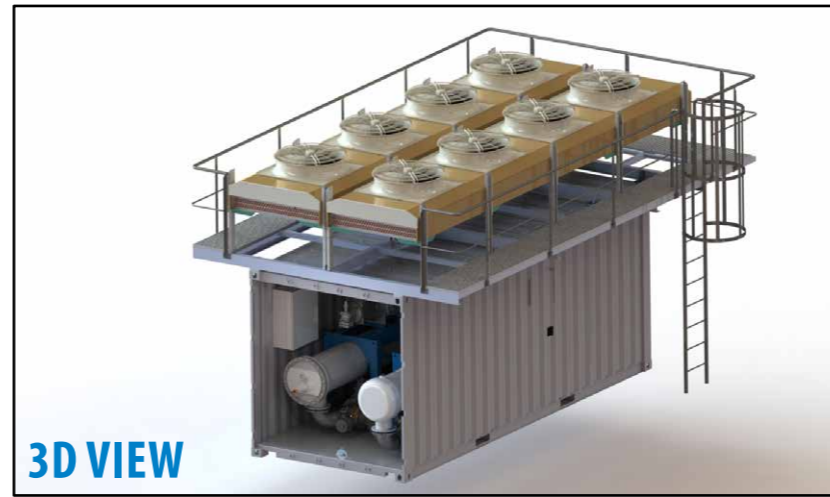
SIDE VIEW



TOP VIEW

### BENEFITS

- \* A more compact and refined solution
- \* Allows the Vacuum Pump system to maintain a high volume and requires less space
- \* Full Automation package including custom designed PLC and Touchscreen
- \* Wide range of volumes
- \* Vastly reduced foot print: traditional tank size is 2200mm diameter compared to KER Group tank of 800mm
- \* Designed, manufactured & installed by KER Group



3D VIEW

## CONTAINERISED RSW SYSTEM

The containerised Freon R134a Refrigerated Sea Water system is a compact and efficient solution featuring 2 x 275KW RSW systems. It is designed for fish processing factories to provide chilled water to fish storage tanks. Fitting in a 20ft container allows the complete system to be housed and secured on site with little disruption to the existing processing plant. The system is suitable for both fresh and sea water setups and has an adjustable set point temperature range, making it a reliable and flexible solution for all your chilling needs.



SIDE VIEW



TOP VIEW

### BENEFITS

- \* Compact design, all components enclosed
- \* Plug & Play design
- \* Less set-up time on-site
- \* No disruption to internal processing facility
- \* Adjustable temperature set-point range
- \* Can be moved from site to site





## CONTACT US

📍 St. Catherine's Road  
Killybegs  
Co. Donegal  
F94 XY45  
Ireland

☎️ +353 74 9731525

✉️ info@ker.ie

🌐 www.ker.ie

