



## CONTACT US

📍 St. Catherine's Road  
Killybegs  
Co. Donegal  
F94 XY45  
Ireland

☎️ +353 74 9731525

✉️ info@ker.ie

🌐 www.ker.ie

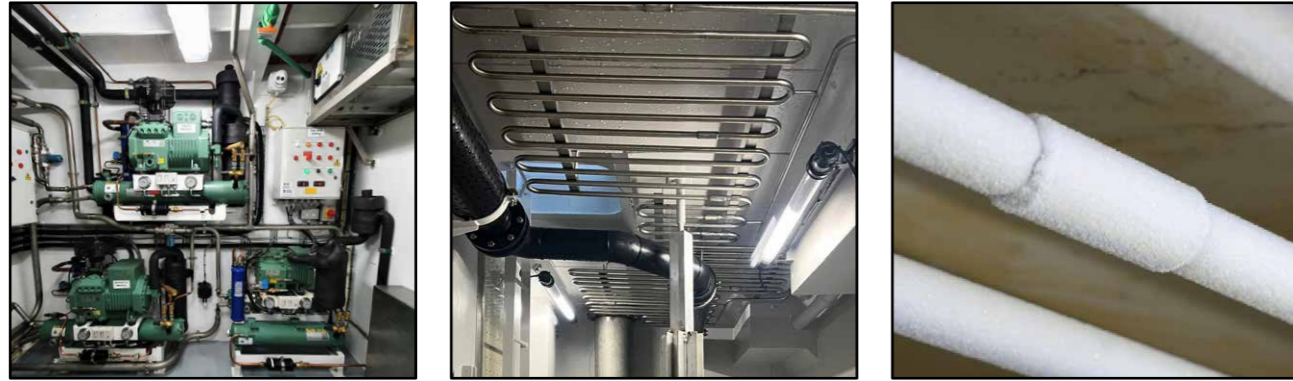


# MARINE REFRIGERATION

# MARINE REFRIGERATION



At KER Group, we understand the quality of your catch is vitally important. That is why we work hard to provide the customer with refrigeration solutions that ensures your fish are preserved and kept in the best possible condition before landing your product onshore.



## WHAT WE CAN OFFER FISH HOLD REFRIGERATION

- \* Custom-Made Stainless-Steel Evaporators
- \* Packaged Bitzer Condensing Units
- \* Custom Electrical Control Panel with Integrated Temperature Control
- \* Temperature range between 0°C & -5°C
- \* Data Logger for temperature monitoring readout
- \* Fresh Water Makers
- \* Low global warming potential refrigerant used



## ICE MACHINES

- \* Flake Ice and Slurry Ice options available
- \* 1t - 5t On-Board Ice Machine
- \* 1t - 15t Shore-Based Ice Machine
- \* Ice Storage and Rake Systems
- \* Bitzer Condensing Units
- \* We partner with brands such as BUUS and Geneglace

# BLAST FREEZING



- \* Room layout is designed for optimal airflow & product freezing
- \* Improve the quality & yield of your catch
- \* Bitzer Condensing Units with typical installation achieving -30°C
- \* Data Logger for temperature monitoring readout
- \* Custom Electrical Control Panel with Integrated Temperature Control
- \* Heavy-Duty Stainless-Steel Insertion Probe
- \* Timber constructed room with fibreglass finish
- \* Closed-cell high-performance insulation used
- \* Heavy-Duty Insulated Door (latch and slidable options available)
- \* Design & manufacture custom S/S Racking system with removable shelves



## COLD STORAGE

- \* Construction of insulated space
- \* Design & installation of Chill Room Evaporator
- \* Fibreglass finish - customer's colour requirement
- \* Non-Slip Floor
- \* Low Temperature Lighting

